

# 4" 360° Rotatable Led Gimbal Downlight 3 Colours IN 1



## Product Description

**Reliable Quality:** This IC rated downlight is permitted to be in contact with combustible material. It is also Wet Locations Rated. Featuring the ELS Signature Royal Blue Metallic Blue Driver Box.

**Body:** Durable airtight aluminum body with UV stable paint and white PMMA COB diffuser lens for low glare. Includes silicone gasket for wet location applications. Includes a newly EZ Slide 360 degree design inner heat dissipation ring, enabling the fixture to keep a smooth, round rear finish. A new 6mm trim adding a luxury finish and curb appeal.

**LED Characteristics**  
This general application light fixture features a 10 watt LED, COB module that maintains uniform intensity producing up to 1150 lumens; with a typical CRI of 90. Available with 3 step CCT switch ( 3000K, 4000K and 5000 K) or Wall Switch on "SW" Mode.

**Beam Spread**  
The fixture lens provides 40° beam spread.

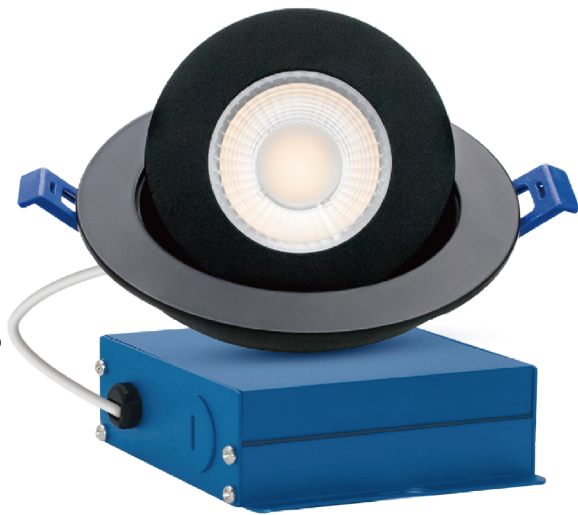
Quick Connect push-in terminals  
"Quick connect" push-in terminals for quick and easy installation.

## Applications

**Dimming**  
100%-10% dimming capability. This fixture is compatible with industry standard TRIAC/ELV dimmers.

**Operating Temperature**  
-30°C ~ 40°C (-22°F ~ 104°F)

**LED Driver**  
Extruded aluminum hardwire box with 370mA (for 6") dimmable class II electronic LED driver with 110-135V AC input. Includes an 18" plenum rated FT1 wire with DC 2.1 connector from driver to fixture.



## Specification

	Input Power	Lumen Output	Equiv	Size	Power Factor	CCT
ELSDW0504G13BK-10	10W	750lm	75W	4"	>0.9	3000K/4000K/5000K

Input Voltage	Dimmable	Beam Angle	CRI	Application	Materials	Lifespan
AC 120V/60Hz	Yes	40degree	>90Ra	Wet Location	Aluminum	50,000 Hours

## Product Dimensions

